

Organizational Profile

Environment Climate Change & Social Development Initiatives (ECSDI)



Alta Plaza (3rd floor), House # 01, Road # 10
Dhanmondi R/A, Dhaka-1205, Bangladesh.
Phone: +88 02 9134607, Cell: +88 01935 220650
E-mail: ecsdibd@gmail.com
www.ecsdibd.org

Physical Identity and Contract Details

Full Legal Name	:	Environment Climate Change & Social Development Initiatives
Nationality	:	Bangladesh
Legal Status	:	Registered under Joint Stock Company and Firms, Government of the People's Republic of Bangladesh under the section 58(1) of the Partnership Act, 1932(IX of 1932); Firm Registration No. P-36213
Official Mailing Address	:	Alta Plaza, 3 rd floor, Road No: 10, House No: 01, Dhanmondi R/A, Dhaka-1205, Bangladesh.
Telephone number	:	+88 02 9134607, Mobile: +88 01935 220650
Website & E-mail	:	www.ecsdibd.org , ecsdibd@gmail.com
Chairperson	:	Dr. Mihir Kanti Majumder (Retired Secretary to the Bangladesh Government).
Managing Director	:	Md. Rashadul Islam, Ex DG, NGO Affairs Bureau (Grade-1), Cell : 01552404422
Contact Person	:	Mr. Md. Rafiul Alam siddiqui, CEO & Managing Partner, ECSDI. Cell : 01935220650

Prologue

ECSDI is an independent professional organization with mandate to operate all over Bangladesh and building global partnership aims to support organizations and individuals.

ECSDI is inclusive in its services ranges are so designed to reach from the grassroots to polygonal. It hubs on the incessant enrichment of own capacities to facilitate improved assignation to it partners. It acknowledges working with immense principles, legitimacy, simplicity, and responsibility, presenting tailored and need-based services to its collaborative agencies and partners.

ECSDI houses a host of experienced, committed, dedicated professional having hands-on experience on development, disaster, climate change, environment, food security, livelihood, agriculture, health, water and sanitation, education and others areas. The professionals render services on a variety of fields for example, planning, strategic planning, monitoring, training, workshops, event management, study, organization development, evaluation, proposal writing, report writing to name a few. ECSDI also extends assistance in developing training module, manual, handbook etc.

Partnership

ECSDI has been striving to build relationship and linkages with government institutions, departments, national and international agencies, business firms and individuals in national and international arena.

Vision

Attaining Augmentation through Quality Service and Client Satisfaction

Mission statement

Working closely and cooperatively with all clients, partners at national and international level to build trust and excellent relationship

Our Values

We ensure performance-based workplace with excellent prospects

Safety: a priority in everything we do.

Trust: reliable, respected, practical and highest integrity.

Responsiveness: accessible and communicative.

Innovation: current, viable and challenging work.

Teamwork: respectful, passionate, diverse, friendly, accommodative, flexible and fair.

Relationships: strong, committed, nurturing, lasting and long term.

Quality: on time, on budget, accurate and good value.

Leadership: professional, forward looking and quality business.

Facilitation:

We are highly skilled at working with groups with diverse dynamics and creating a place to have honest, open and productive dialogue. We will provide the environment for your organization and your team to have conversations you need to have, identify common themes and issues and arrive at shared and practical solutions.

Strategic Planning:

Our strategic planning process identifies where you are now, where you want to be and how you are going to get there. We help you to reflect, analyze and develop viable plans for the future. Through understanding your challenges and future aspirations, we will tailor a planning and implementation process specific to your organizational needs and aspirations. We will work with you to set realistic goals, identify opportunities and allocate resources. Our aim is to help you to develop strategies that are innovative and achievable.

Organizational Development:

Reaching your mission and fulfilling your objectives can be dependent on the effectiveness of your organization's structure, staffing and internal process. We aim to fresh perspectives and approaches in order to maximize the effectiveness of your structure and revitalize your staff's motivation and work place culture.

Change Management:

In any change process consultation group works with the organization to maximize benefits and minimize adverse impacts through a clear and sequential framework. Our team will work with you to provide opportunities by tailoring processes to enable key organizational stakeholders to be included in the journey towards change. Building broad organizational ownership and support for the change is central consultation group's approach for change management. ECSDI is committed to social justice, sustainable development and human rights.

Our Services

ECSDI offers a vast range of services focused on meeting the needs of our Clients. Our performance record of working in some of the most complex environments shows that we are highly able to develop creative, effective and sustainable solutions. We provide creativity, imaginative, purposeful, dependable services to our clients to ensure success. Our services are targeted on development and capacity building including climate change, environment, food security, livelihood, agriculture, health, water and sanitation, education and others areas. We work both with development organizations and private companies. We are committed to provide excellence at every stage of our service.

Environmental Assessments

ECSDI provides full life cycle (cradle to grave) environmental planning from conceptual project planning through regulatory applications, construction, reclamation, post-construction monitoring, auditing and decommissioning.

We provide a full range of environmental assessment services, for any project scale, including:

- Initial Environmental Examination (IEE)
- Environmental and Socio-Economic Assessments
- Environmental Management plan
- Cumulative Effects Assessments
- Environmental Site Assessments
- Environmental Impact Assessment

Research and Study:

ECSDI conducts custom research for projects. To find out actual condition of a fact or to find out constraints, possible solution and opportunities or to understand any market; research and study is a precondition. Our research and study is to find out what our client wants to know and we have records of successfully conducting research and study.

We have a skilled and energetic team to ensure the in-depth quality research and study. Our team is also skilled in research tools development. Our research includes:

- **Scoping Study:** Stepping into new areas of work requires defining the scope and dimension of work, the required readiness of the market.
- **Feasibility Study:** A bright business idea might not work in reality. It depends on the market dynamics, consumer behavior, economic and social condition, internal capacity of the organization in materializing the opportunities, capital generation, risk analysis, market growth and growth potentiality, etc. ECSDI has expertise in feasibility study that helps enterprises and organizations to take decision in stepping into business.
- **Sub-sector & Value Chain Study:** Sub-sector & value chain analysis is very much important for understanding market and starting positive change in market. Without understanding market, no positive change can be introduced. ECSDI has conducted many sub sector or value chain analyses successfully and thus, we have sound knowledge and experience on sub-sector, value chain, market and its trend.
- **Marketing Research:** ECSDI provides services for the enterprises in conducting market research, consumer analysis, developing promotional materials, publications, etc.
- **Business Plan Preparation:** Business plan is the strategic guideline for enterprises on how the business will be executed. Having involved in private sector/enterprise development for several years, ECSDI has the required capacity in drawing up business plan according to the clients need.

Besides, ECSDI provides more vast range of customized research facility including rural marketing system analysis, baseline surveys, constraints and opportunities studies, socio-economic research, gender analysis, etc.

Consultancy and Technical Services

ECSDI offers a wide range of long term and short term consultancy and technical services for governmental and nongovernmental (NGOs) organizations, private sector corporations and multi-national companies, MSMEs and MSME clusters, trade bodies and associations, cooperative societies and rural farming communities.

Training, Workshop and Seminars

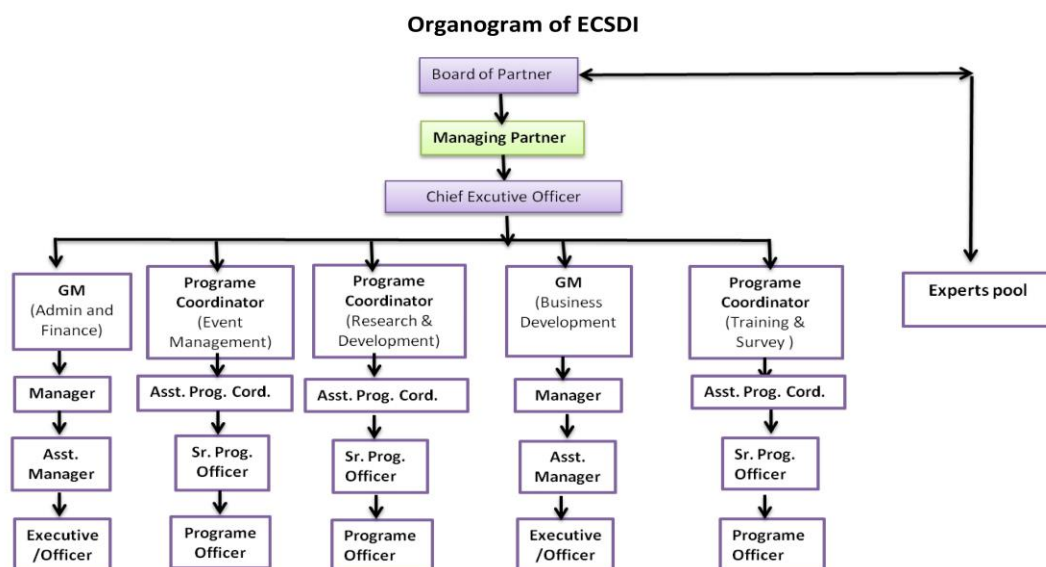
Our Team and professionals are equipped with state-of-the-art materials and methodology for conducting trainings, workshops and seminars by maintaining high academic credibility based on realistic and factual contents. Moreover, training modules, courses and schedules are developed and implemented as per internationally recognized standards and local need based assessments. Workshops and seminars are arranged and conducted in line with international best practices as well as local norms.

Project Management and Implementation

From designing to implementation, we provide complete project management solutions to our clients. We specialize in livelihood projects, technology promotion projects, community development, rural market access creation and women empowerment.

Project monitoring and evaluation

Without impacts and compelling stories, projects are only papers. ECSDI specializes in project monitoring and evaluation, which would give your project the right directions to achieve the targets and show the results. We develop tools for monitoring and evaluation. Our project monitoring and evaluation services include base line establishment, impact assessment, case studies, impact stories, thought piece, intervention brief, intervention logic, logical framework, Result Based Monitoring (RBM), project evaluation, project reviews, etc.



LIST OF ECSDI RECENT WORK

SL No	Name of the project	Donner/ Implementing org.	Duration	Contract reference
1	Mid-term evaluation for improving the livelihoods of extremely poor people by promoting green energy and biodiversity in the context of climate change in disaster-affected areas of Bangladesh (ILPGB)	AH & BMZ / CB	2 Month	Mr. Bikash Biswas, Program Officer, CB Email: bikash_biswas@caritasbd.org;
2	Preparation and Commission of the Policy Guidelines under Green climate fund (GCF) of UNFCCC for Sustainable Climate Finance for Shariah Based Banks and Financial Institutions	BB/GCF	12 Month	Khondkar Morshed Millat General Manager (Project Director), Department of Sustainable development, Bangladesh Bank. Email: gm.sfd@bb.org.bd
3	Feasibility Study on saline crops/ horticulture and Halophytes in Cox's Bazar district and exploration of their market opportunities	WFP / ICCO Cooperation	1 Month	Mr. Abul Basher, Project Manager, Email: a.basher@icco-cooperation.org
4	Baseline Study Saline Agriculture Project	WFP / ICCO Cooperation	1 month	Do
5	Mid-term Evaluation of the the "Strengthen civil society and public institutions to combat gender-based violence and build community resilience to adapt climate change impacts" Project.	SIDA / MJF	3 Month	Ms. Tasmin Akter, Deputy Program Manager-M&E, E-mail : tasmin@manusher.org
6	A Study on "Climate Resilient Agriculture in Coastal and Flood-plain Regions of Bangladesh". (Report link: https://ecsdibd.org/wp-content/uploads/2020/11/Climate-Resilient-Agriculture-in-Coastal-and-Flood-plain-Regions-of-Bangladesh.pdf)	SIDA / MJF	3 Month	Ms. Zakia Naznin, Ex Deputy Program Manager E-mail : zakia@manusher.org
7	Endline Evaluation "Community Climate Change Project (CCCCP)"	World Bank / PKSF	3 Month	Mr. Zahir Uddin Ahmed Deputy General Manager E-mail: jahiruddin@pksf-bd.org
8	Mid-term Evaluation of the Community Development Program	MHA / JS	2 Month	Mr. Mithu Sarkar, Program Manager E-mail : jeshfoundationbd@yahoo.com
9	Endline Evaluation of the "Solar Energy Development in the climate vulnerable areas of Bangladesh" Project	BCCT / PDBF	3 Month	Md. Aminul Islam, Director E-mail : aminul@pdbf.gov.bd
10	End line Evaluation of the "Augmenting Disaster Risk Reduction and Climate Change Adaptation Capacity of the Communities in the South-western Bangladesh" program	IR,B/UK Govt.	3 Month	Mr. Munirul Islam, Ex Programme Manager E-mail: munirul.islam@islamicrelief-bd.org

** BB= Bangladesh Bank, GCF = Green Climate Fund, WFP =World Food Program, MJF= Manusher Jonno Foundation, JS= Jesh Foundation, IR,B= Islamic Relief, Bangladesh, PDBF=Palli Daridro Bimochon Foundation, MH,A= Mutual Homes-Australia, SIDA= Swedish International Development Authority, PKSF= Palli Karma-Sahayak Foundation, BCCT= Bangladesh Climate Change Trust. AH = Andheri Hilfe, BMZ= German Federal Ministry for Economic Cooperation and Development, CB= Caritas Bangladesh